



Overnight Restrictions on Vine Street

Safety & Impact Analysis

April 4, 2016



NOTE: Approval of our LAPD Captain is required by LA-DOT for sign removal. This complete packet was delivered to Captain Cory Palka on April 4, 2016.

date: April 4, 2016

cc: SLO Manny Sanchez, CD4 Adam Miller, HUNC Board

Dear Captain Palka:

Thank you for taking time to meet about the overnight parking restrictions on Vine Street between Argyle Avenue and Vedanta Terrace.

You are extremely important in this matter. Even though we have over 400 signatures for removal — including the DOT's required 2/3 property frontage signatures — the DOT requires a letter signed by you before they can act.

We want to be sure that you have ALL relevant safety information relating to this issue. We believe SLO Manny Sanchez was acting in good faith when he formed his opinion after meeting with a small group of people against removal.

Unfortunately, it appears he was not provided with:

- Correct information about the origin of the restrictions
- Information about current criminal activity happening now *because* of the signs
- Safety analysis and impacts inclusive of the surrounding streets
- Information about the gentrification of our area in the last 3 decades (including the emptying of criminal hub buildings at 1938 + 2017 Argyle 20 years ago)

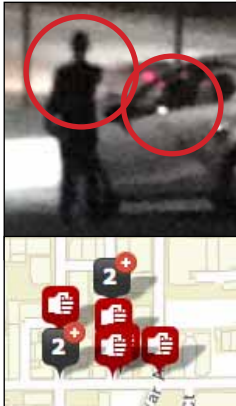
We are grateful for this opportunity to present the evidence that, **because safety is a serious concern, these restrictions cannot stay up**. Keeping these restrictions will continue providing parking for criminals, endangering residents, and posing a far greater risk not just for the safety of the immediate block, but also for the community as a whole.

Respectfully,

Cheryl Gaskill and Ishmael Arredondo



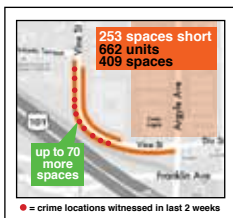
CONTENTS



SAFETY ISSUES

CHART: Restrictions INCREASE Crime

- A** Loitering, lewd acts + drug dealing ([photos](#), [testimonials](#))
- B** Increasing area crimes may stem from drug users ([testimonials](#))
- C** Car break-ins ([LAPD CrimeMapping](#))
- D** Graffiti ([photos](#))
- E** Assaults + sex crimes ([LAPD CrimeMapping](#))
- F** Dangerous driving conditions on Argyle ([photos](#))
- G** “Blind” curve — Worse curves in Dell allow parking ([map](#), [photos](#))

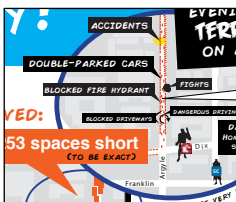


BACKGROUND

General Issue Backgrounder

How many spaces are on Vine? ([map](#))

Origin of signs ([memo](#))

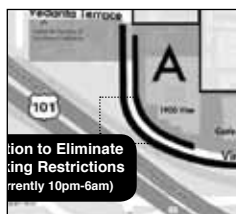


THE NIGHTMARE ON ARGYLE

Comic

Testimonials

Argyle Ave parking shortages ([map](#))



CURRENT STATUS

Timeline of resolution efforts

Copy of petition

Current status ([chart](#))

Overnight Restrictions *Increase* Crime

A = related evidence




Overnight Restrictions...	Removal is SAFER:
<p>PERSONAL & PROPERTY SAFETY</p> <p>... are enabling loitering, lewd acts + drug dealing</p> <ul style="list-style-type: none"> Restrictions are currently enabling criminal acts — outsiders are driving up and getting guaranteed short-term parking to use for committing these crimes. A Besides the acts themselves, this situation is bringing drug users into our neighborhood who may be noting what's here and returning to steal to get money for their next drug score. B These crimes are <i>not</i> happening on Argyle which has no open nighttime parking + heavy foot traffic. No objective evidence (statistics, evidenced trends, etc.) has been presented to show that removal will cause crime. These expressed fears are based on area 30 yrs ago when threats of crime came from <i>within</i>. Three decades later, our area is gentrified and threats are coming from OUTSIDE the community in cars. No crime is occurring from walk-ups and there are no "kids" in our neighborhood. 	<p>Removing the signs allows residents access to <i>safer parking</i> + creates an <i>increase in residential foot traffic</i>, both of which will make the area SAFER.</p> <p>Crimes are LESS likely to occur when:</p> <ul style="list-style-type: none"> Parking is filled by residents coming home from work at 5-6pm, blocking parking from criminals later at night* Foot traffic of residents traveling to/from their cars is introduced, putting more invested eyes, ears and boots on the ground to: <ul style="list-style-type: none"> help patrol our community and discourage criminal behavior
<p>... increase the risk of car break-ins</p> <ul style="list-style-type: none"> Cars not allowed to park on Vine still have to park somewhere. With the signs up, drivers are forced to park on darker, more remote streets like Carmen and Vista del Mar. Per CrimeMapping, those areas show a much greater risk for car break-ins. C If we eliminated parking everywhere a car break-in might occur (or even has occurred) we'd have no parking anywhere. We're not mandating FORCING residents to park there — merely giving them a choice they don't have right now. <i>This is a chance that over 400 people are willing to take over the risk of bodily harm they currently face having to park further away.</i> 	<p>SAFER:</p> <p>By allowing residents to park closer, they are in less danger with every trip to/from their cars.</p>
<p>... are enabling graffiti</p> <p>Graffiti is currently a problem because of guaranteed parking + desolate conditions. D</p>	<p>SAFER:</p> <p>Having more parking available gets residents off the road and into their homes sooner, instead of contributing to the road hazards in the area.</p>
<p>... increase the risk of bodily harm to residents</p> <p><i>The further a resident has to park from their home, the greater the risk.</i></p> <p>Per LAPD statistics, residents that have to park outside the immediate Vine-Argyle area face an increased risk of sex crimes and an increased risk of assaults. E</p>	
<p>... increase the number of 3-point turns by cars seeking parking</p> <p>Area residents currently search the whole area now for parking, so the 3-point turns will not change. <i>Except that having more parking options will get them off the road sooner.</i></p>	
<p>DRIVING SAFETY</p> <p>... are contributing to dangerous driving conditions on Argyle</p> <p>Current lack of available parking encourages law-breaking + endangers our safety:</p> <ul style="list-style-type: none"> Cars block fire hydrants + driveways as people leave vehicles unattended to unload groceries or heavy items, make deliveries or wait for parking. F Cars waiting for spaces double-park on both sides, creating driving hazards. Repetitive circling/sharking for spaces, erratic drivers randomly lurching into sudden stops and 180's. 	
<p>... have no effect on so-called "blind curve" concerns</p> <ul style="list-style-type: none"> Parking is currently allowed there in the dark (6-10pm), with no accident statistics provided demonstrating an increase in accident frequency. Likely non-issue for DOT: 1) DOT found it safe 30 yrs ago; 2) "Blind Curve" is not mentioned in DOT memo about why signs were posted; 3) Every time Vedanta gets these restrictions lifted this is a not a DOT concern. Current restrictions extend well beyond the curve. Many far more "blind" curves throughout the Dell allow parking. G 	

*There is no question that these 70 spaces will be filled in the evening: 253 residents on Argyle do not have parking.

CONTINUES



Lack of available parking is also...

 QUALITY OF LIFE	<p>... contributing to the degradation of quality of life for residents</p> <ul style="list-style-type: none">• Time spent trying to find a space• Time spent walking to/from your car that's parked far away• Unloading groceries, heavy items currently impossible without breaking the law + parking in the red• Residents can't have friends over• Residents go out less for fear there won't be a space on their return
 LOSS OF GOOD WILL	<p>... creating a tense, angry air in our community</p> <ul style="list-style-type: none">• Residents are angry at each other over parking spots — not just verbal, but actual physical assaults have occurred• Residents are angry at those wanting to keep the parking restrictions. Frustrated residents are starving for parking, when a half block away perfectly usable parking is being kept empty by neighbors who <i>don't need them</i>, but won't allow their neighbors access.<ul style="list-style-type: none">- Lack of precedent: No other building in area prohibits parking on both sides of the street around its perimeter.- Unfair: tax-payer paved streets should belong to everyone unless there is strong objective evidence of justification — especially in the face of evidence to the contrary
 FINANCIAL BURDEN	<p>... creating a financial burden for residents</p> <ul style="list-style-type: none">• Cost to rent parking elsewhere (\$138/mo +)• Increase in ticket fines per limited options• Extra gas used while hunting spaces• Uber/Lyft fees
	<p>... contributing to revenue losses for homeowners on Argyle</p> <p>Area building owners site frequent tenant turnover <i>specifically due to lack of parking</i></p>



Current restrictions are causing loitering, lewd behavior, and drug dealing.

The posted signs create *desolate conditions + wide open parking*, which are enabling crime.

The existing situation is a **drug dealer's dream**:

- Close to nightclub customers
- Freeway-adjacent
- High vantage to spot oncoming police
- Dark
- Relatively desolate/low foot traffic
- Guaranteed temporary parking

Removing the signs will eliminate these.

Evidence of crime NOW

photos + testimonies, 3/6-3/18

Sunday, March 6, 2016 11:00 pm – 12:30 am

Multiple cars parked in the "no parking after 10pm" area on Vine Street (no photos taken). There were people on the other side of the fence smoking weed, doing graffiti and taking pictures.

Monday, March 7, 2016 11:55 pm

Multiple witnesses saw evidence of drug dealing + lewd acts



CONTINUES



Wednesday, March 9, 2016 10:30 pm — email from area residents

Last night after the meeting we drove up to that area near of a Vedanta and we saw **three or four cars parked there** and guys lounging in the cars. We stopped and looked at them. Then we saw a guy jump out of the car and walk around the corner. We followed him and then **he was urinating (pissed) on the steps across** from the Vedanta-I think it's the residences at the monks live in!!!! Unbelievable. Then we saw the **parking police up there giving tickets** and I think they were moving the people out I'm not sure. We didn't stay long enough. I don't know what to make of it because that mischief is going on up there right now as it is. I wonder why the condo residents are not doing something about that already!!!

██████████ had a good point that if we do park in those spots people will fill them up after work, 5 and 6 o'clock, when they get home from work and maybe it will block out the mischief that happens later at night.

Saturday, March 12, 2016

10:12 pm — Suspiciously slow-driving black SUV with tinted windows noted at at the intersection of Vine + Vedanta (no photo).

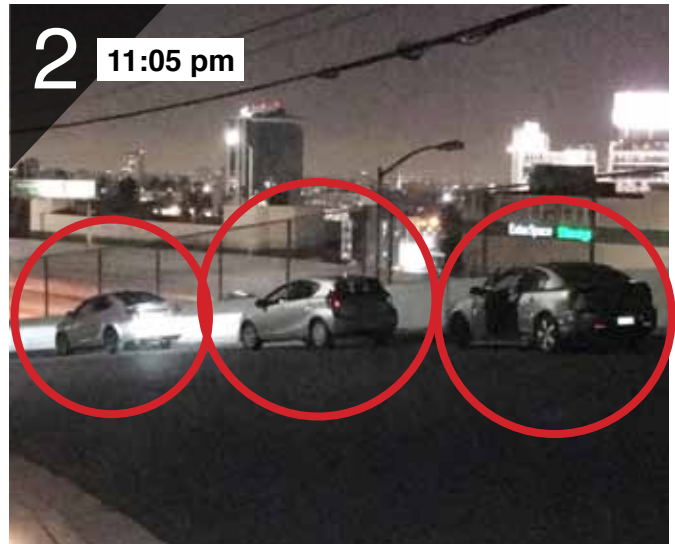
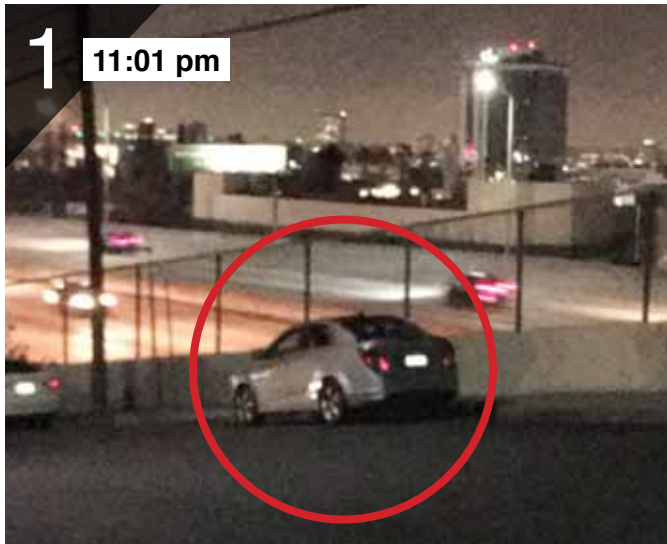
10:15 pm — 2 people loitering outside the car



CONTINUES



11:00 pm — **Series of photos:** 1 car was parked. Then two cars pulled up, stopped, and a guy got out and went over to one of the cars. An exchange of some kind was made.



11:30 pm — **Presence of slow-driving black SUV with tinted windows seen again in area by another witness.**

CONTINUES



Sunday, March 13, 2016 10:03 pm

A few minutes after 10pm, a **silver car** pulled up and stopped in the “no parking after 10 pm area” on the NW side, a few “spaces” behind the last legally parked car. The silver car parked, and shut off its lights and engine. (note: it looked like the one that was there the night before, documented on March 12).

A couple of minutes later a **white car** (coming from the north by Vedanta Terrace and speeding down towards Argyle) *pulled very deliberately in front of the silver car to park.*

Presumably, the **driver of the white car saw Ishmael holding iPhone up to take a photo**, because he peeled out and took off having been there for less than a minute (this car is depicted here). The silver car was still stationary after we left and no one got out, but I could see at least 1 passenger inside.



The white car peeling out.

As we walked home, a **black corvette** with black-tinted windows raced up the street as though trying to hit us, swerving to stop just in front of us on the side of the road. The car remained with its lights on us and no one got out. It is impossible to tell with the tinted windows, but it appeared to watch us as we went into my home. Ten minutes later the car was still there (with its lights still on).

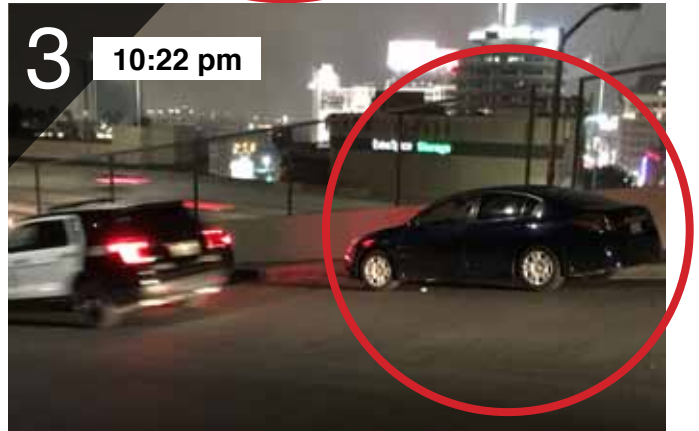
CONTINUES



Friday, March 18, 2016 10:21 pm

LAPD + DOT Parking Enforcement present.

Police officers were out of car, talking to car behind them as I arrived.



As LAPD left, parking enforcement pulled in behind a different car parked further down towards Argyle. It didn't appear any citations were issued.

CONTINUES



17 minutes after LAPD and DOT leave, 3 more cars arrive.

2 cars parked close together on the curve; front car pulled out and drove off as I slowly pulled up behind them.



A different black car was parked further up on curve.

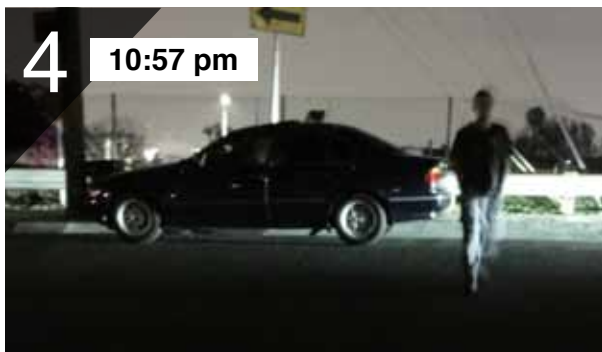
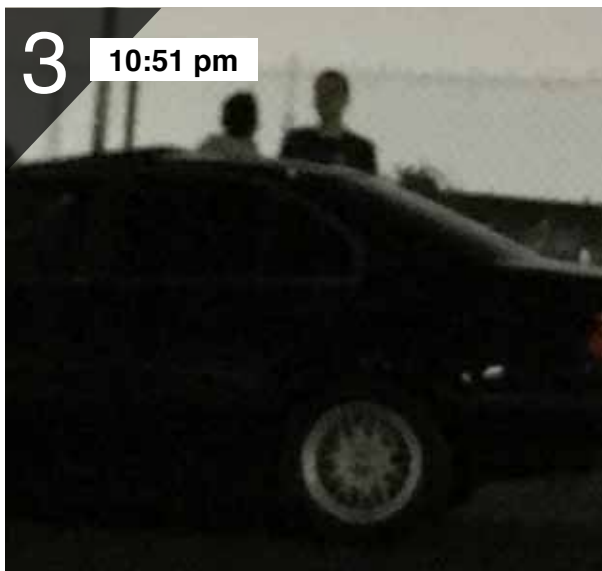
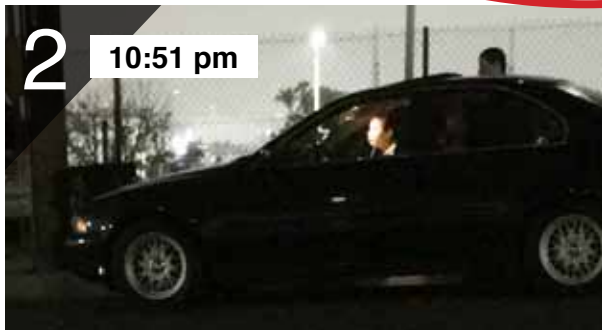


(this car is shown from a different angle on following page)

CONTINUES



2 guys got out of the black car, smoking weed. One came over to confront the witness/photographer.



CONTINUES

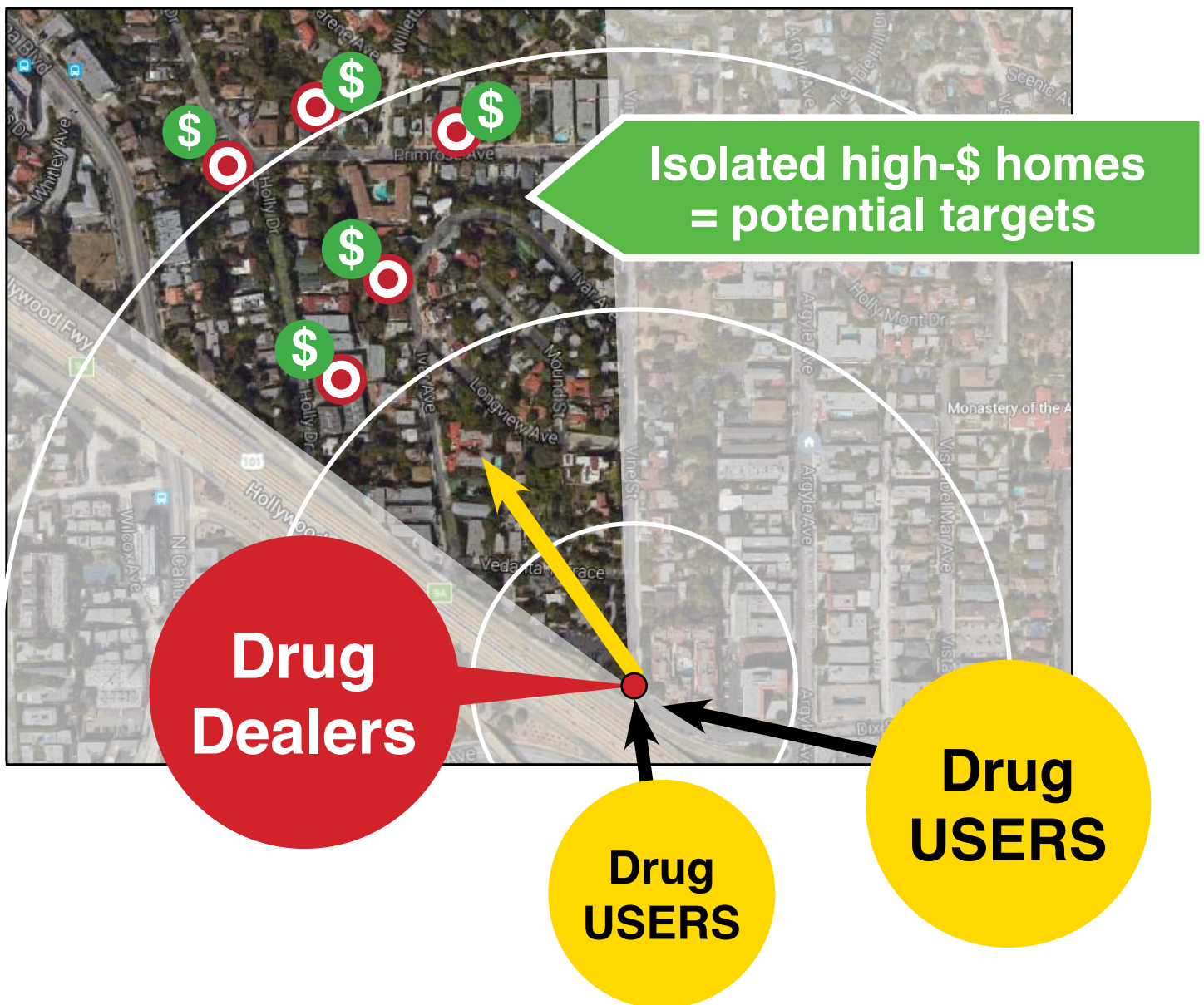


Black car arrived, parked. Guy in black car got out of car (man on right). Silver car arrived and passenger got out and went over to black car guy.



B Increasing area crimes may stem from drug users

The open spaces are bringing drug dealers into our neighborhood, who attract **drug users** who burn through money. Once they are in the area, it's likely they will take note of the nice homes in the Dell as potential **targets for burglaries** for their next drug score.



CONTINUES



General testimonies of increasing crimes from Hollywood Dell area residents:

“I’m shocked at what has happened in our area in the last few years. I moved into the Dell in 1999 and it was always one of the lowest crime areas in the city. Now it seems the opposite. ... A lot of **characters are hanging around The Temple** at the top of the hill at night.” — MM, 2/24/16

“On the urging from our Lead LAPD officer, I am posting that burglaries are on the rise in our area. She highly recommends that residents install and be sure to use alarm systems and security cameras.” — NM, 2/15/16

“As one North Hollywood police officer so clearly told me “Your in your own”. They have an impossible job to do; proper **policing is not possible due to being so understaffed.** They are really frustrated by this, and **Prop 47.** Generally 5 cars on the road to cover 22 square miles.” — MP, 2/13/2016

“We’ve had a lot of problems with car break-ins, home break-ins, suspicious transients loitering around the neighborhood and sleeping the tunnels that have been recently reported to this site. It’s become an alarming issue due to the frequency.” — MS, 2/15/16

“There seems to be a surge of crime in the lower dell.” — JT, 5/30/2015

“I don’t think drug addict thieves care much about being taped on video. Thanks to prop 47 if they get caught it’s a misdemeanor and they rarely do jail time.” — HN, 1/18/2016

A guest in my home on Holly in the Dell had his **gas siphoned 2X** in the past month. Between the **mail theft**, the **car break-ins** and the **gas siphoning** our once **“safe” neighborhood is being hit a bit too often** for my peace of mind. — MS, 2/10/16

Testimony of increasing crimes from Hollywood Dell Civic Association:



~~~~~

### **Hollywood Dell Civic Association**

#### **Neighborhood News & Events**

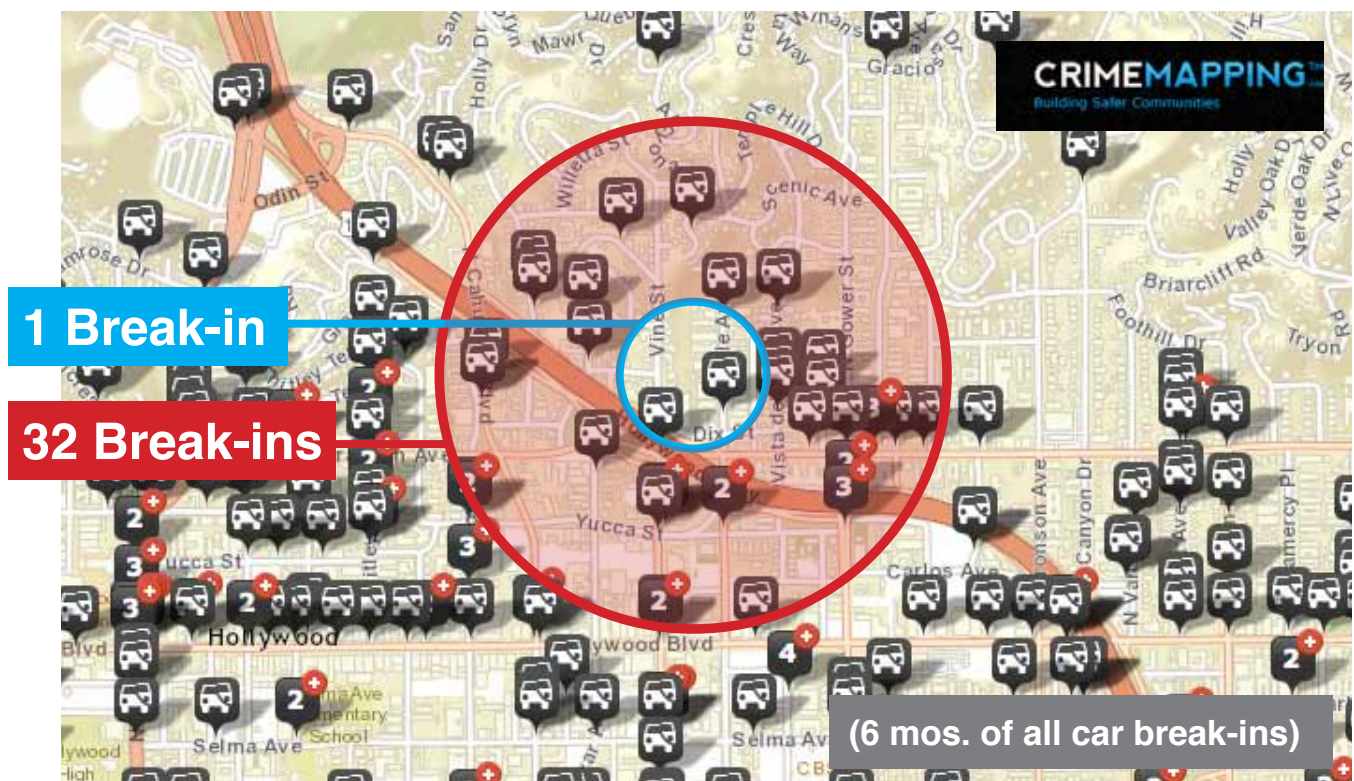
A burglary crime spree is on the rise in the area. Here is a burglary caught on tape. Keep alert, lock your doors. Our awareness is the BEST deterrent. <http://www.nbclosangeles.com/on->



# © Car break-ins are more likely with the signs up.

Cars not allowed to park on Vine still have to park somewhere. There is no evidence that break-ins would be more frequent on Vine than where people are parking now instead.

In fact, by not being able to park close by on Vine — inside the blue circle, where break-ins are minimal — drivers are forced to park on *darker, more remote streets* like Carmen and Vista del Mar in the red circle. Per the map, *those areas show a much greater risk for car break-ins.*



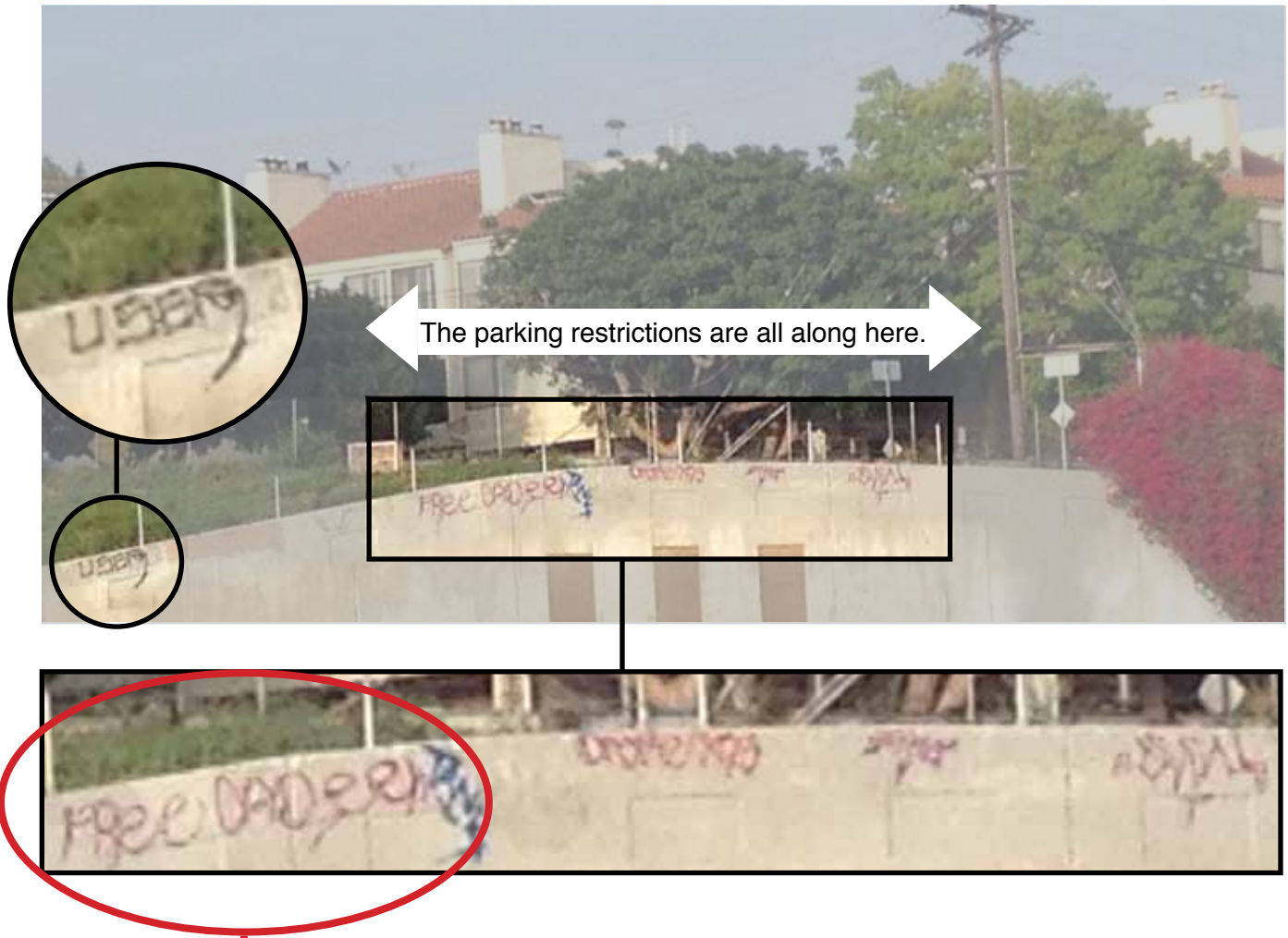
source: LAPD referring site: CrimeMapping.com (per Officer Sanchez)





## Graffiti is occurring NOW because of signs — likely to decrease with sign removal.

3/19/16: This picture shows the condition of graffiti in the area **with the signs in place**. Those against sign removal state that they *currently make graffiti removal requests a few times per week*. It seems very likely that allowing residents to park at night instead of criminals (plus the resulting increase in residential foot traffic) is very likely to decrease graffiti. This is a much smaller problem on Argyle where there is foot traffic and no parking.



### Possible gang-related graffiti

“FREE (name)” often refers to gang members who are (or were) in jail.

source: <http://www.oncentral.org/news/2012/03/07/know-your-graffiti-disses-threats-and-mexican-mafi/>

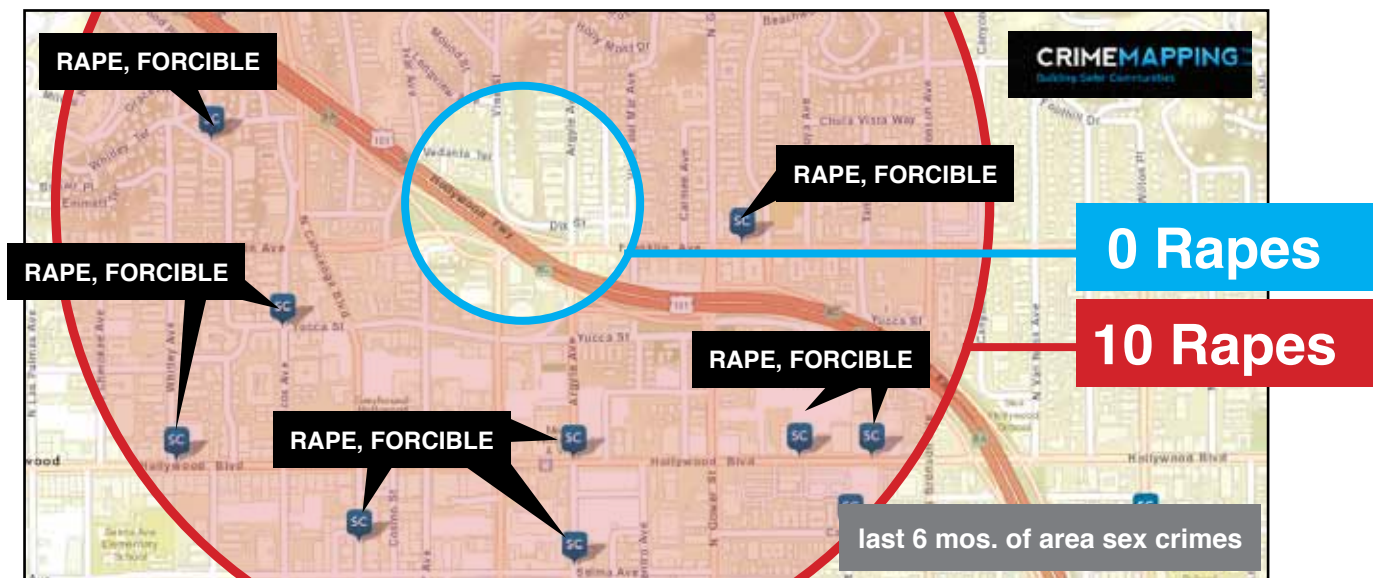




Potential for bodily harm to area residents is far more likely with the signs up.

The further a resident has to park from their home, *the greater the risk.*

Per LAPD statistics, residents having to park outside the immediate area face a **greater risk of sex crimes:**



...and a **greater risk of assaults:**



Maps: LAPD referring site — CrimeMapping.com (per Officer Sanchez)





# Having the signs up increases the dangerous conditions on Argyle.

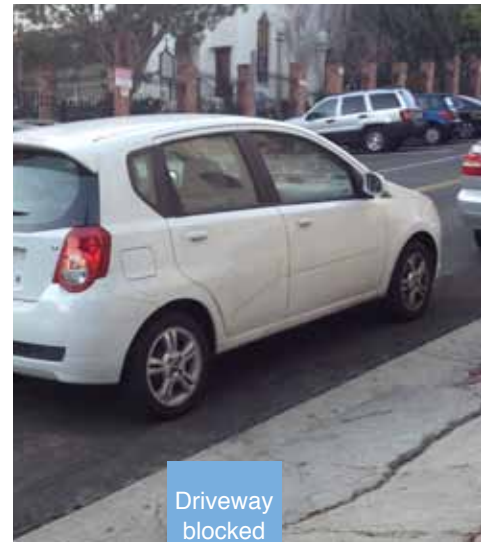
## The lack of parking encourages law-breaking and endangers safety.

Cars **block fire hydrants + driveways** as people leave vehicles unattended to unload groceries or heavy items, make deliveries or wait for parking. Cars waiting for spaces **double-park** on both sides, creating driving hazards. **Repetitive circling/sharking for spaces, erratic drivers** randomly lurching into sudden stops and 180s.

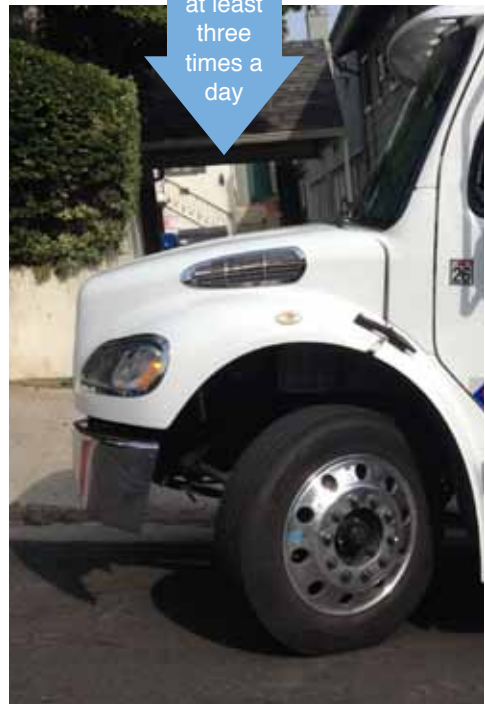
Drivers have to run the gauntlet around double-parked cars



Unattended vehicles block driveways

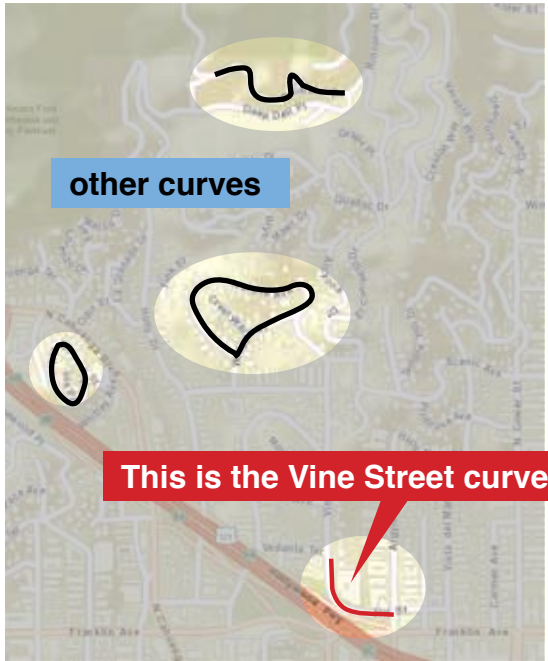


Driveway blocked at least three times a day

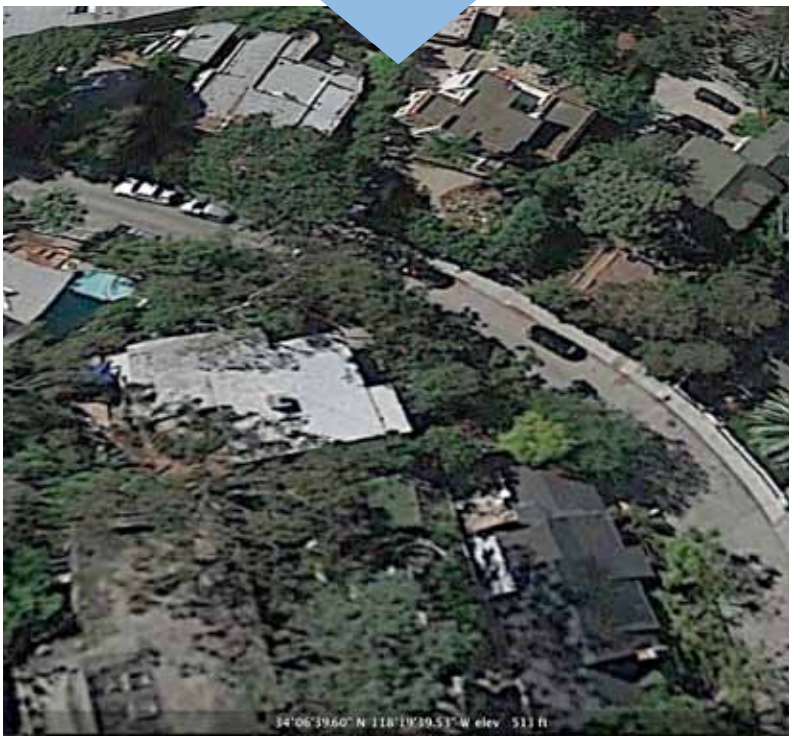




The Hollywood Dell area is full of far more dangerous curves that allow parking.



other curves



# General Issue Backgrounder

**At issue:** Possible removal of posted overnight parking restrictions (10pm-6am) on Vine Street between Argyle Avenue + Vedanta Terrace.

**Restriction sign origins:** Posted at least 30 years ago due to crime, drug use and criminal loitering. The nightly unavailability of these spaces a half block away has been a sore spot for parking-starved Argyle-area residents for decades and remains so today.

**Net impact:** Eliminating restrictions would create up to 70 more (parallel parking) nearby overnight spaces for area residents. Argyle Ave N of Franklin has a shortage of 253 spaces at 1 space/unit (662 units, 284 spaces in buildings + 125 spaces on Argyle). Potential impact is significant (+70 spaces = nearly 60% increase over current street parking)

**LA-DOT frontage properties:** Castle Argyle, 1900 Vine/Murray Hill Condos, Vedanta Society and 1 private home. (2/3 signatures req. for removal via direct DOT rules — Argyle has those signatures)



| Affected Parties |             |                                                                         |                                                |                                |                                                                                                                                                                     |
|------------------|-------------|-------------------------------------------------------------------------|------------------------------------------------|--------------------------------|---------------------------------------------------------------------------------------------------------------------------------------------------------------------|
| Restrictions     | Qty         | Affected Parties                                                        | Needs Parking                                  | Has Parking                    | safety evidence                                                                                                                                                     |
| PRO REMOVAL      | 400+ people | 400+ petition signers:<br>Area Building Owners,<br>Managers + Residents | 253 spaces short<br>(662 units,<br>409 spaces) | —                              | LOTS. Photos + testimonies that crime is flourishing <b>now</b> due to signs + proof that 70 residents are in more danger each night walking further to their cars. |
|                  |             | Castle Argyle                                                           | 78 spaces short<br>(98 units,<br>20 spaces)    | —                              |                                                                                                                                                                     |
|                  |             | Argyle Civic Association                                                | n/a                                            |                                |                                                                                                                                                                     |
| ANTI REMOVAL     | 26 people   | Some residents of 1900 Vine                                             | —                                              | 2 gated off-street spaces/unit | NONE. No objective concrete evidence of alleged possible future crimes has been presented.                                                                          |
|                  |             | Some residents in Hwood Dell                                            | —                                              | homes with off-street parking  |                                                                                                                                                                     |
| DIVIDED          |             | Vedanta                                                                 | gets restrictions lifted as needed             | gated off-street parking lot   |                                                                                                                                                                     |

**Arguments for removal of restrictions:** Evidence shows restrictions are actually *enabling* crime by providing guaranteed night parking for outsiders dealing drugs and other criminal activities. Criminal elements from Argyle when signs posted 30 years ago are gone — now young urban professionals. **Parking need:** Adjoining Argyle Ave is 253 parking spaces short. **Hardships to residents include:** Increased exposure to assault and sex crimes from having to park further away • Assaults that have occurred fighting over parking spaces on Argyle • Dangerous driving conditions on Argyle from cars blocking fire hydrants, driveways and double-parking • Financial impacts including ticket fines, extra gas to find parking and costs to rent parking elsewhere • Reduction in quality of life via time drain and inability to go out or have visitors • Tense conditions in the community. **Hardships to owners** include the high cost of frequent tenant turnover specifically due to a lack of parking.

**Arguments against removal of restrictions:** **With restrictions in place:** crime, drug use, lewd acts + loitering have been minimized • Litter is reduced • Graffiti is reduced (removal requests currently made a few times per week) • Car storage (excess of 72 hours on streets) reduced in restricted zone • Abandoned vehicles immediately apparent in restricted zone • Traffic hazards from “blind curve” reduced • Cars making 3-point turns looking for parking are reduced. **2004-2015:** Efforts by Argyle to communicate with potentially opposed parties went ignored or were stonewalled.



# How many spaces are on Vine?

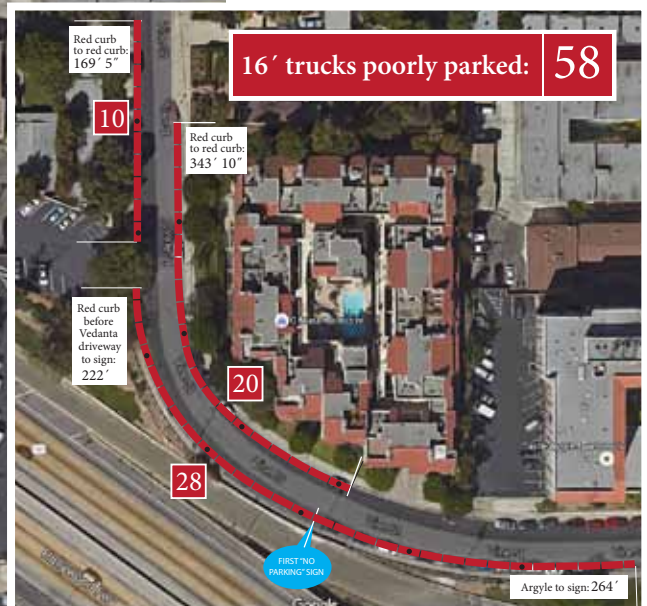
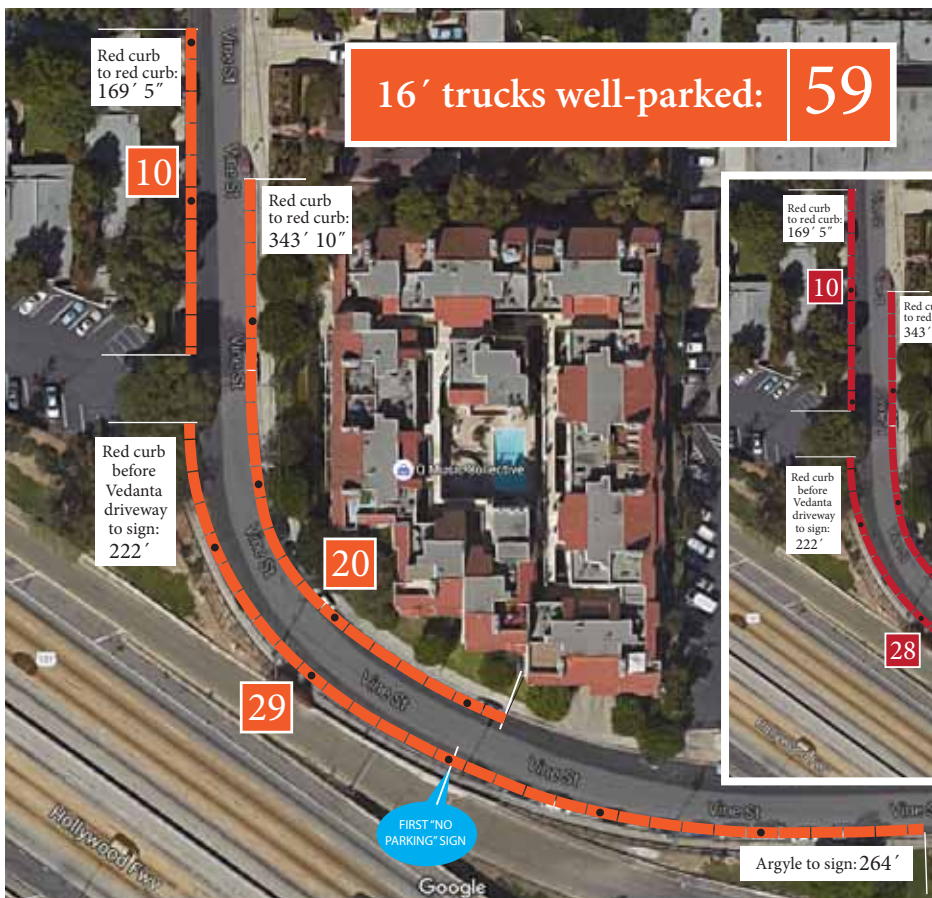
All Vine Street spaces are parallel, so the count varies by the size of the cars parking and the spaces between them. These maps were created by measuring the actual roads, car lengths and spaces between, then trying out different scenarios. The average number of spaces of the 3 cars sizes well-parked is 70.3.



|                                                                                                                           |                                                                                                                     |  |
|---------------------------------------------------------------------------------------------------------------------------|---------------------------------------------------------------------------------------------------------------------|--|
| <p><b>Car/truck lengths:</b></p> <p>small car: fiat = 11'<br/>         med-Honda Civic = 14'<br/>         truck = 16'</p> | <p><b>Space between cars: 6-9"</b></p> <p>well parked = 6" between cars</p> <p>poorly parked = 12" between cars</p> |  |
|---------------------------------------------------------------------------------------------------------------------------|---------------------------------------------------------------------------------------------------------------------|--|

CONTINUES





## Origin of Signs

- Signs are actually **30 years old**, not 20 as we were told
- Signs posted by the HOA president working directly with Councilman Mike Woo — **not through LAPD**
- “Blind curve” was a non-issue per the memo
- **Signatures 30 years ago numbered 100 for the signs; now it’s 26 signatures for (that we know of) and 400+ against the signs**

From: “TRACY FIELDS” <33844@lapd.lacity.org>  
Date: October 27, 2015 at 1:27:12 PM PDT  
To: “Argyle Civic Association” <argylecivic@att.net>  
Subject: Re: parking

I have to leave right now but this is the message that I received. Perhaps the Councilmans Office can help get rid of them!  
Tracye

Hi Tracye,

We don't have records indicating that the signs were justified because of LAPD request. However, there is letter dated April 20, 2000 from the Vice President of the Murray Hill Condominium Owners Association stating that the association work with then Councilmember Mike Woo and LADOT in the 1980s to get these signs posted to address all-night drinking parties along the street, alleged drug-dealing and prostitution, abandoned vehicles, people sleeping in cars, graffiti, littering, etc. The association wrote on behalf of more than 100 owners and residents to continue to keep the posted restrictions as a necessity to protect the peace and safety of the neighborhood as well as their investment of the community.

Hollywood-Wilshire District Office  
Department of Transportation  
6501 Fountain Avenue  
Los Angeles, CA 90028  
Tel.: (323) 957-6843  
Fax: (323) 957-4576





# The Nightmare on Argyle Avenue

COMMUNITY  
**SAFETY!**

**EVENINGS ARE TERRIFYING ON ARGYLE.**

ARGYLE AVE IS **PARKING-STARVED:**

**253 spaces short (TO BE EXACT)**

MEANWHILE ON VINE STREET, UP TO

**70 spaces sit empty**

DUE TO POSTED **OVERNIGHT RESTRICTIONS.**



ACCIDENTS

DOUBLE-PARKED CARS

BLOCKED FIRE HYDRANT

BLOCKED DRIVEWAYS

FIGHTS

DANGEROUS DRIVING

HELP!

DANGEROUS LONG WALKS HOME: INCREASED RISK FOR SEX CRIMES + ASSAULT

THINGS ARE VERY BAD HERE!

**EACH NIGHT IN THE "NO PARKING" ZONE...**

**DRIVE-UP CRIMES ARE OCCURRING WHERE RESIDENTS ARE NOT ALLOWED TO PARK**

● = crime locations

WHILE RESIDENTS STRUGGLE, THOSE 70 SPACES ARE USED BY **OUTSIDE CRIMINALS** FOR **LOITERING, LEWD ACTS AND DRUG DEALS.**

**NOT WHERE RESIDENTS ARE PARKED.**

IF ALLOWED: **RESIDENT CARS WOULD BLOCK THE PARKING FROM CRIMINALS... AND**

**BONUS!**

THE INCREASING **FOOT TRAFFIC FROM RESIDENTS WOULD HELP THWART CRIME.**

Resident cars **BLOCK** criminal cars from parking

(YAY!)

DRAT!



**SAFER STREETS + SAFER RESIDENTS**



## Testimonials from Argyle Residents and Owners

“I am afraid to walk on Gower at night. We literally have to plan our lives around a parking space. **It’s like living in a prison.**”

– Theresa

“I feel this is **not safe for a single woman**, especially in the evenings, but I obviously have no choice.”

– Marie

“I can never have friends over and I am afraid to go anywhere because I will lose my space. **I am hostage to lack of parking.**”

– Laura

“One night I came **home from the emergency room and couldn’t find any parking anywhere.** I had to park a long way from home and I was in excruciating pain ... wasn’t sure I’d make it home.”

– Michelle

“One time I drove around for 30 minutes in order to find a spot on one of the nearby streets, **sometimes waiting in red zones** to wait for someone to leave. **we spend more money using car services** to avoid parking issues later; **we avoid running errands after work.**”

– Lauren

“I estimate that I **lose approx. 30-40 minutes every day** looking for/walking to and from parking. I also **do not leave once I am home or go out** because I know I won’t be able to find parking. **I don’t feel safe many nights** making the walk from (past) the Best Western to my home.”

– Katie

“If I arrive home from work after 8pm I can expect to be looking for a space for at least **20-30 minutes.** Usually ending up somewhere near Beachwood or Franklin Village.”

– James

“It has been a **continuous hassle to the point I currently do not have a car**, largely due to the parking situation.”

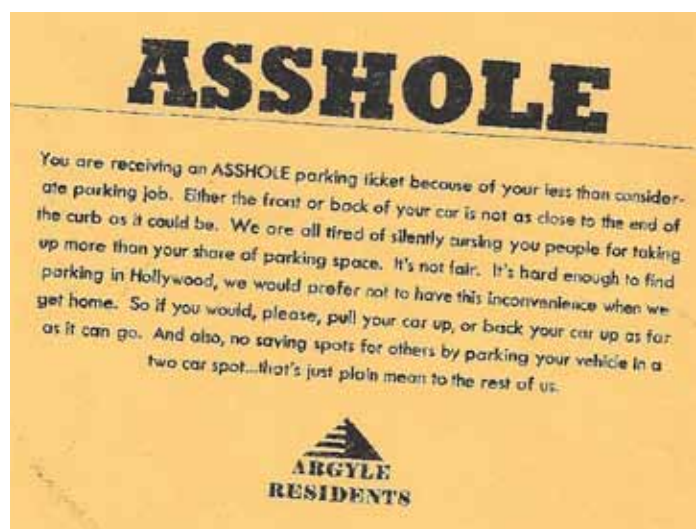
– Benjamin

I was returning home one evening around 5 pm. I parked, but when I opened my car door **two neighbors attacked me. One guy from the back and the other from the front hit me in my head. They were claiming that I took their parking space.** While they were getting in their car, I was able to write their lic. plate number down. The guy that was driving came back, stopped the car and tried to put his hand in my pocket to retrieve the paper. When a witness/neighbor pulled up next to them the guy got scared and took off. Later, I identified the driver and he spent 4 months in jail.

– Ishmael

“It’s very hard to rent without a garage. **I have frequent move-outs due specifically to parking.**”

– Jason, Owner



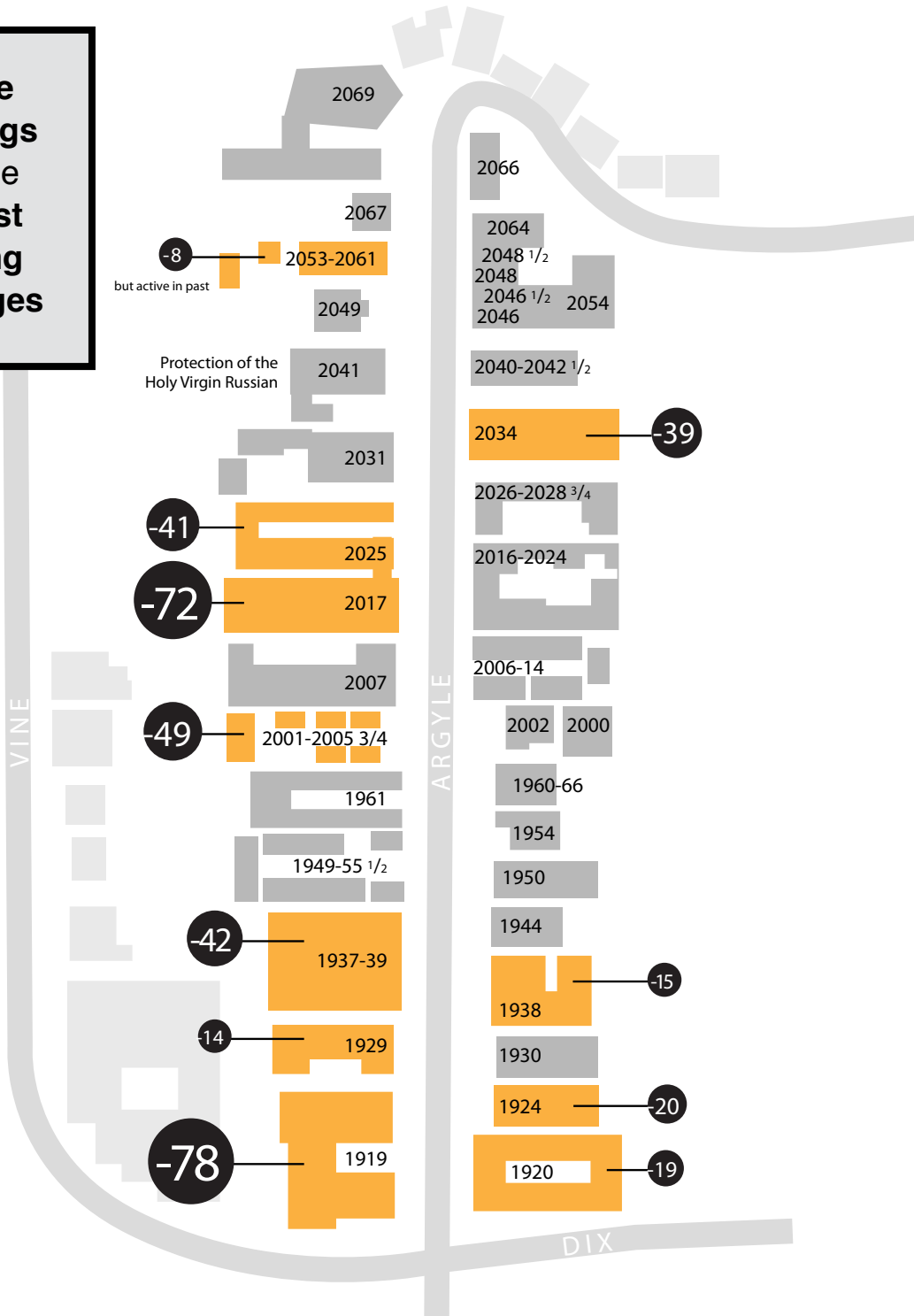
Sample flyer left on parked car



# Where are the parking shortages coming from?

● = (Number of Units) - (Number of Parking Spaces)

**Argyle Buildings with the Biggest Parking Shortages**



# Timeline of Resolution Efforts

**2004-2015** Efforts by Argyle to communicate with potentially opposed parties went ignored or were stonewalled.

**2/13/16** **The ACA began circulating a petition to remove the restrictions.** On 2/28 a posting by Murray Hill resident **Bob Adjemian on NextDoor** brought opposition to light. Both agreed to meet to attempt to resolve mutual concerns with a compromise by/for the community.

**3/9/16** **Dell-Argyle Community Meeting.** 11 pro-removal + 22 against came together. It is the first time these neighborhoods have met in over 20 years. Each side expressed their concerns, then divided into four mixed-opinion solutions groups and brainstormed ideas to help Argyle with parking. Over 20 unique ideas were proposed, all voted for their favorites. The ACA immediately began implementation of the highest-voted parking solutions.

***Even if these are 100% successful, Argyle Ave will still be 253 parking spaces short of 1 space/unit.***

**New information:** (photos and eyewitness testimonies) It was discovered that cars are using the “No Parking after 10pm” empty spaces on Vine Street for drug exchanges, lewd behavior and loitering... ***the very crimes anti-removal side allege will happen if residents are allowed to park there are happening now.*** Pro-removal side believes restrictions are enabling this situation by providing desolate conditions and short-term parking at night for outsiders, and that bringing drug users into area may be contributing to crimes and robberies.

**3/14/16** **HUNC Public Safety, Works, Trans Committee Meeting** — Pro-removal side presents evidence of crime in restricted spaces to anti-removal group (via George Skarpelos)

**3/17/16** **Adam Miller’s Office** — Pro-removal side presents evidence of crime in spaces, issue backgrounder + copies of the 400+ petitions to remove restrictions and asks for help getting 3 Vine street lights fixed; Bob Adjemian submits 26 Murray Hill signatures against removal

**3/18/16** Pro-removal side puts second community meeting on hold. (Multiple reasons, including lack of interest: “Choose the meeting date” invitations went out on 3/10, only 2 RSVPs as of 3/18 — none from anti-removal side.)

**Pro-removal side submits proposal with concessions to address expressed anti-removal concerns** — 3/18 email to George Skarpelos, and 3/19 to Ed Harrison, Ed Anderson, Warren Heaton, George Skarpelos, Patti Negri; cc: Erik Sanjurjo, Susan Polifronio, Adam Miller.

Given the evidence, it is clear that current parking restrictions are not deterring crime—they are enabling it.

**PROPOSAL with three simultaneous changes:**

- 1. Remedy BOTH the area crime AND parking problems by removing all overnight restrictions on Vine Street**
- 2. Post new DAYTIME restrictions** on Vine between Argyle and Vedanta Terrace to minimize long-term car storage: “2 Hour Parking, 8 AM to 6 PM, Except Saturday and Sunday” (standard issue DOT sign)
- 3. The ACA offers to join the HDCA in a monthly trash cleanup of the currently-restricted area**

We feel this proposal will reduce crime by:

- Allowing residents to fill the currently empty spaces, making them unavailable to criminals;
- Creating foot traffic in the currently desolate area as residents travel to and from their cars;
- Providing closer and safer parking for area residents;
- Discouraging car storage/72+ hour parking.

Having weighed the options and the evident danger of leaving the top of Vine Street wide open to criminals at night, this appears to be the safest solution for the community as a whole.



# Copy of Petition

## Petition to Add Parking by Eliminating Parking Restrictions on Vine Street

**Problem:** Neighborhood is plagued by a lack of residential parking (hundreds of spaces short). New developments in the area will only exacerbate this situation.

**Proposal:** LA-DOT should remove signs currently restricting parking between 10pm-6am on Vine Street between Argyle Avenue and Vedanta Terrace.

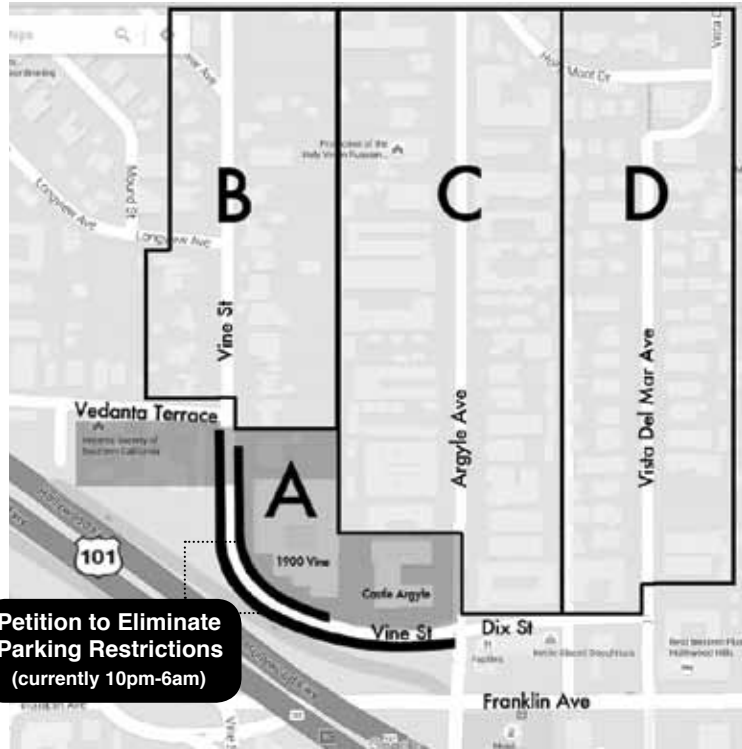
**Net effects:**

▶ **About 70 more spaces** for our parking-plagued neighborhood. (perspective: this would be a 56% increase in street parking for Argyle Ave.)

▶ **Increased safety** for residents currently having to park blocks away and walk home at night;

▶ **Improve quality of life for residents** currently wasting 30-60 minutes every day waiting for spaces to open up; Loading/carrying heavy items and groceries great distances from their homes; Allowing them to leave at night without fear of not getting a space upon return or have a friend over.

▶ **Potential reduction in crime** by filling the currently open space with neighbor's cars — taking it away from criminals currently using the open area to case homes, litter, and use and/or deal drugs.



**Petition to Eliminate Parking Restrictions (currently 10pm-6am)**

**I am in favor of eliminating the parking restrictions on Vine Street between Argyle Avenue and Vedanta Terrace.**

Signature \_\_\_\_\_

Name (print) \_\_\_\_\_

Address \_\_\_\_\_

Phone \_\_\_\_\_

Email \_\_\_\_\_

I live in map area:  A  B  C  D

**I am signing as (check one):**

- Commercial Building Owner
- Condo Association President or Corporate Officer : # of Units \_\_\_\_\_
- Apartment Building Owner : # of Units \_\_\_\_\_
- Apartment Building — Individual renter or leasee
- Single Family Home — Individual owner, renter or leasee

**To ask questions or return completed petitions:**  
**Argyle Civic Association**  
 c/o: Pres. Ishmael Arredondo  
 P.O. Box 1481, LA, CA 90078  
 323-240-9187  
 argylecivic@att.net

**Signing requirement:**  
 If signing as an Owner, HOA President or Corporate Officer, your signature should represent the majority of your tenants (apartment or condo).

**400+ people have signed**



# Current Status

|                           | Keep Signs                       | Remove Signs                                                    |
|---------------------------|----------------------------------|-----------------------------------------------------------------|
| Safety Evidence Presented | (none)                           | Evidence that crime is flourishing due to signs                 |
|                           |                                  | Proof that 70 residents are in more physical danger each night  |
|                           |                                  | Evidence car break-ins more likely with signs up                |
|                           |                                  | Evidence of dangerous driving conditions due to lack of parking |
| Conditions                | Dark – 3 street lights out       | We reported broken lights to Ryu's office                       |
|                           | Guaranteed parking for criminals | Residents blocking spaces from criminals                        |
|                           | Desolate                         | Resident foot traffic/built-in neighborhood watch               |
| For/Against               | 26 signatures                    | 400+ signatures                                                 |
| <b>DOT REQUIREMENTS</b>   |                                  |                                                                 |
|                           |                                  | <input checked="" type="checkbox"/> 2/3 frontage signatures     |
|                           |                                  | <input type="checkbox"/> LAPD Captain letter/signature          |

